

CONDENSER TUBE EXPANDER

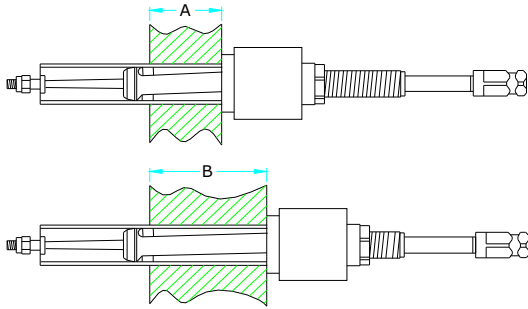


TUBE TOOLS

✦ **B8012-Series** Tube O. D. 1.3/4" - 5"

FEATURES:

- Use -This is recommended to expand tubes in air heaters boilers , & refinery still tubes. Can be used to expand thick tube sheets (Upto 8")
- Advantages: It gives a more concentric and even expansion when expanding thin walled tubes vs conventional 3 roller tube expander and reduces tube spring back effect.



For Tube Internal Diameter
From (36.1mm) 1.420" to (123.7mm) 4.870"

TUBE EXPANDERS FITTED WITH ROLLER LENGTH		FOR TUBE SHEET ADJUSTABLE RANGE	
		MINIMUM A	MAXIMUM B
2.1/4" (57.1mm)	STD. REACH	(12.7mm) 1/2"	(101.4mm) 4"
	-6" REACH	(12.7mm) 1/2"	(152.4mm) 6"
	-8" REACH	(12.7mm) 1/2"	(203.2mm) 8"

Tube O.D. (Mm) inch	Tube Thickness			Tube I. D.		Minimum I. D. Tool Enters		Maximum Expansion of Tool		EXPANDER with (57.15 mm) 2.1/4" Long Rollers Complete		
	Bwg	Inch	Mm	Inch	Mm	Inch	Mm	Inch	Mm	Tool No.	Roller Set No.	Mandrel No.
(44.45) 1.3/4	8	.165	4.19	1.420	36.1	1.368	34.7	1.550	39.3	B8012-1.3/4-8	R-33-A	M-90
	10	.134	3.40	1.482	37.6	1.420	36.0	1.607	40.8	B8012-1.3/4-10	R-37-A	M-90
	11	.120	3.04	1.510	38.3	1.454	36.9	1.635	41.5	B8012-1.3/4-11	R-42	M-90
	12	.19	2.76	1.532	38.9	1.482	37.6	1.657	42.0	B8012-1.3/4-12	R-44	M-90
	13	.095	2.41	1.560	39.6	1.510	38.3	1.685	42.7	B8012-1.3/4-13	R-46	M-90
	14	.083	2.10	1.584	40.2	1.532	38.9	1.709	43.4	B8012-1.3/4-14	R-48	M-90
(50.80) 2	8	.165	4.19	1.670	42.4	1.595	40.5	1.795	45.6	B8012-2-8	R-48	M-91
	10	.134	3.40	1.732	43.9	1.640	41.6	1.857	47.1	B8012-2-10	R-50	M-91
	11	.120	3.04	1.760	44.7	1.670	42.4	1.885	47.8	B8012-2-11	R-52	M-91
	12	.109	2.76	1.782	45.2	1.704	43.2	1.907	48.4	B8012-2-12	R-54	M-91
	13	.095	2.41	1.810	45.9	1.732	43.9	1.956	49.6	B8012-2-13-18	R-56	M-91
	14	.083	2.10	1.834	46.5	1.732	43.9	1.956	49.6	B8012-2-13-18	R-56	M-91
	15	.072	1.83	1.856	47.1	1.732	43.9	1.956	49.6	B8012-2-13-18	R-56	M-91
	16	.065	1.65	1.870	47.4	1.732	43.9	1.956	49.6	B8012-2-13-18	R-56	M-91
	17	.058	1.47	1.884	47.9	1.732	43.9	1.956	49.6	B8012-2-13-18	R-56	M-92
18	.049	1.24	1.902	48.3	1.732	43.9	1.956	49.6	B8012-2-13-18	R-56	M-92	
(57.15) 2.1/4	10	.134	3.40	1.982	50.3	1.890	48.0	2.107	53.5	B8012-2.1/4-10	R-56	M-92
	11	.120	3.04	2.010	51.0	1.920	48.7	2.135	54.2	B8012-2.1/4-11	R-58	M-92
	12	.109	2.76	2.032	51.6	1.954	49.6	2.157	54.7	B8012-2.1/4-12	R-60	M-92
	13	.095	2.41	2.060	52.3	1.982	50.3	2.185	55.4	B8012-2.1/4-13-16	R-62	M-92
	14	.083	2.10	2.084	52.9	1.982	50.3	2.185	55.4	B8012-2.1/4-13-16	R-62	M-92
	15	.072	1.83	2.106	53.4	1.982	50.3	2.185	55.4	B8012-2.1/4-13-16	R-62	M-92
(63.50) 2.1/2	10	.134	3.40	2.232	56.6	2.140	54.3	2.407	61.1	B8012-2.1/2-10-12	R-64	M-93
	11	.120	3.04	2.260	57.4	2.140	54.3	2.407	61.1	B8012-2.1/2-10-12	R-64	M-93
	12	.109	2.76	2.282	57.9	2.140	54.3	2.407	61.1	B8012-2.1/2-10-12	R-64	M-93
	13	.095	2.41	2.310	58.6	2.232	56.6	2.450	62.2	B8012-2.1/2-13-18	R-64	M-94
	14	.083	2.10	2.334	59.2	2.232	56.6	2.450	62.2	B8012-2.1/2-13-18	R-64	M-94
	15	.072	1.83	2.356	59.8	2.232	56.6	2.450	62.2	B8012-2.1/2-13-18	R-64	M-94
	16	.065	1.65	2.370	60.1	2.232	56.6	2.450	62.2	B8012-2.1/2-13-18	R-64	M-94
	17	.058	1.47	2.384	60.6	2.232	56.6	2.450	62.2	B8012-2.1/2-13-18	R-64	M-94
	18	.049	1.24	2.402	61.0	2.232	56.6	2.450	62.2	B8012-2.1/2-13-18	R-64	M-94

CONDENSER TUBE EXPANDER



TUBE TOOLS



B8012-Series

**Tube O. D.
1.3/4" - 5"**

Tube O.D. (Mm) inch	Tube Thickness			Tube I. D.		Minimum I. D. Tool Enters		Maximum Expansion of Tool		EXPANDER with (57.15 mm) 2.1/4" Long Rollers			
	Bwg	Inch	Mm	Inch	Mm	Inch	Mm	Inch	Mm	Complete Tool No.	Roller Set No.	Mandrel No.	
(69.85) 2.3/4	10	.134	3.40	2.482	63.0	2.390	60.7	2.702	68.6	B8012-2.3/4-10-16	R-66	M-96	
	11	.120	3.04	2.510	63.7	2.390	60.7	2.702	68.6	B8012-2.3/4-10-16	R-66	M-96	
	12	.109	2.76	2.532	64.3	2.390	60.7	2.702	68.8	B8012-2.3/4-10-16	R-66	M-96	
	13	.095	2.41	2.560	65.0	2.390	60.7	2.702	68.6	B8012-2.3/4-10-16	R-66	M-96	
	14	.083	2.10	2.584	65.6	2.390	60.7	2.702	68.8	B8012-2.3/4-10-16	R-66	M-96	
	15	.072	1.82	2.606	66.1	2.390	60.7	2.702	68.8	B8012-2.3/4-10-16	R-66	M-96	
	16	.065	1.65	2.620	66.5	2.390	60.7	2.702	68.8	B8012-2.3/4-10-16	R-66	M-96	
(76.20) 3	8	.165	4.19	2.670	67.8	2.560	65.0	2.829	71.8	B8012-3-8-9	R-67	M-97	
	9	.148	3.75	2.704	68.6	2.560	65.0	2.829	71.8	B8012-3-8-9	R-67	M-97	
	10	.134	3.40	2.732	69.3	2.640	67.0	2.952	74.9	B8012-3-10-18	R-67	M-96	
	11	.120	3.04	2.760	70.1	2.640	67.0	2.952	74.9	B8012-3-10-18	R-67	M-96	
	12	.109	2.76	2.782	70.6	2.640	67.0	2.952	74.9	B8012-3-10-18	R-67	M-96	
	13	.095	2.41	2.810	71.3	2.640	67.0	2.952	74.9	B8012-3-10-18	R-67	M-96	
	14	.083	2.10	2.834	71.9	2.640	67.0	2.952	74.9	B8012-3-10-18	R-67	M-96	
	15	.072	1.82	2.856	72.5	2.640	67.0	2.952	74.9	B8012-3-10-18	R-67	M-96	
	16	.065	1.65	2.870	72.8	2.640	67.0	2.952	74.9	B8012-3-10-18	R-67	M-96	
	17	.058	1.47	2.884	73.3	2.640	67.0	2.952	74.9	B8012-3-10-18	R-67	M-96	
	18	.049	1.24	2.902	73.7	2.640	67.0	2.952	74.9	B8012-3-10-18	R-67	M-96	
	(88.9) 3.1/2	13	.095	2.41	3.311	84.1	3.190	81.0	3.464	88.0	B8012-3.1/2-10-18	R-70	M-99
14		.083	2.10	3.334	84.7	3.190	81.0	3.464	88.0	B8012-3.1/2-10-18	R-70	M-99	
15		.072	1.83	3.354	85.2	3.190	81.0	3.464	88.0	B8012-3.1/2-10-18	R-70	M-99	
16		.065	1.65	3.370	85.6	3.190	81.0	3.464	88.0	B8012-3.1/2-10-18	R-70	M-99	
17		.058	1.47	3.385	86.0	3.190	81.0	3.464	88.0	B8012-3.1/2-10-18	R-70	M-99	
18		.049	1.24	3.401	86.4	3.190	81.0	3.464	88.0	B8012-3.1/2-10-18	R-70	M-99	
(101.6) 4	3	.259	6.60	3.480	88.4	3.425	87.0	3.780	96.0	B8012-4-3-4	R-71	M-100	
	4	.236	6.00	3.527	89.6	3.425	87.0	3.780	96.0	B8012-4-3-4	R-71	M-100	
	8	.165	4.19	3.670	93.2	3.582	91.0	3.940	100.0	B8012-4-8-9	R-71	M-101	
	9	.148	3.75	3.704	94.1	3.582	91.0	3.940	100.0	B8012-4-8-9	R-71	M-101	
	10	.134	3.40	3.732	94.8	3.661	93.0	3.960	100.6	B8012-4-10-18	R-72	M-101	
	11	.120	3.04	3.760	95.5	3.661	93.0	3.960	100.6	B8012-4-10-18	R-72	M-101	
	12	.109	2.76	3.783	96.1	3.661	93.0	3.960	100.6	B8012-4-10-18	R-72	M-101	
	13	.095	2.41	3.811	96.8	3.661	93.0	3.960	100.6	B8012-4-10-18	R-72	M-101	
	14	.083	2.10	3.834	97.4	3.661	93.0	3.960	100.6	B8012-4-10-18	R-72	M-101	
	16	.065	1.65	3.870	98.3	3.661	93.0	3.960	100.6	B8012-4-10-18	R-72	M-101	
	(114.3) 4.1/2	3	.259	6.60	3.980	101.1	3.940	100.0	4.291	109.0	B8012-4.1/2-3-4	R-73	M-102
		4	.236	6.00	4.030	102.3	3.940	100.0	4.291	109.0	B8012-4.1/2-3-4	R-73	M-102
8		.165	4.19	4.170	105.9	4.020	102.0	4.370	111.0	B8012-4.1/2-8-9	R-73	M-102	
9		.148	3.75	4.204	106.8	4.020	102.0	4.370	111.0	B8012-4.1/2-8-9	R-74	M-102	
10		.134	3.40	4.232	107.5	4.100	104.0	4.450	113.0	B8012-4.1/210-18	R-74	M-103	
11		.109	2.76	4.283	108.8	4.100	104.0	4.450	113.0	B8012-4.1/210-18	R-74	M-103	
16		.065	1.65	4.370	111.0	4.100	104.0	4.450	113.0	B8012-4.1/210-18	R-74	M-103	
12		.109	2.76	4.783	121.5	4.606	117.0	4.960	126.0	B8012-5-10-18	R-78	M-105	
(127.0) 5	3	.259	6.60	4.480	113.8	4.410	112.0	4.763	121.0	B8012-5-3-4	R-76	M-105	
	4	.236	6.00	4.527	115.0	4.410	112.0	4.763	121.0	B8012-5-3-4	R-76	M-105	
	8	.165	4.19	4.670	118.6	4.566	116.0	4.921	125.0	B8012-5-8-9	R-77	M-105	
	9	.148	3.75	4.704	119.5	4.566	116.0	4.921	125.0	B8012-5-8-9	R-77	M-105	
	10	.134	3.40	4.732	120.2	4.606	117.0	4.960	126.0	B8012-5-10-18	R-78	M-105	
	11	.120	3.04	4.763	121.0	4.606	117.0	4.960	126.0	B8012-5-10-18	R-78	M-105	
	12	.109	2.76	4.783	121.5	4.606	117.0	4.960	126.0	B8012-5-10-18	R-78	M-105	
	14	.083	2.10	4.834	122.8	4.606	117.0	4.960	126.0	B8012-5-10-18	R-78	M-105	
	16	.065	1.65	4.870	123.7	4.606	117.0	4.960	126.0	B8012-5-10-18	R-78	M-105	