

# CONDENSER TUBE EXPANDER



**TUBE TOOLS**

## ✦ 'B1200-5' SERIES 1200-5 Series Rollers For Thin Wall Tubes

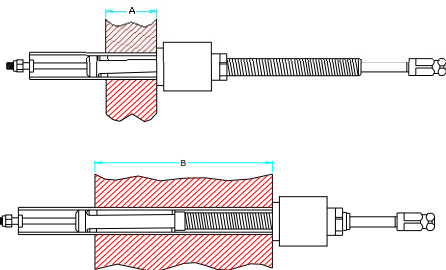
Tube O. D.  
3/4" - 1.1/2"

### FEATURES:

- Advantage: it gives more concentric & even expansion when expanding thin walled tubes vs. A conventional 3 roller expander & reduces spring back effect of the tubes
- Use - Highly recommended for use on thin walled tubes (19thru 22 gage walls) of stainless steel, Titanium Incoloy, & other exotic materials in thick tube sheets
- Expanders for tube sizes not listed below are also available. Please enquire



Sizes Available : 1/2" O.D. to 1.1/2" O.D.  
Tube Internal diameter : 8.4mm (0.334") to 36.3mm (1.43")  
Roller Length of Tube Expander: 1.1/2" (38.1mm) & 2.1/4" (57.1mm)



TUBE EXPANDERS FITTED WITH ROLLER LENGTH		FOR TUBE SHEET ADJUSTABLE RANGE	
		MINIMUM A	MAXIMUM B
(38.1mm) 1.1/2"	STD. REACH	(38.1mm) 1.1/2"	(152.4mm) 6"
	"A" REACH	(38.1mm) 1.1/2"	(203.2mm) 8"
	"B" REACH	(38.1mm) 1.1/2"	(253.8mm) 10"
	"C" REACH	(38.1mm) 1.1/2"	(304.6mm) 12"
	"D" REACH	(38.1mm) 1.1/2"	(355.6mm) 14"
(57.1mm) 2.1/4"	STD. REACH	(57.1mm) 2.1/4"	(171.4mm) 6.3/4"
	"A" REACH	(57.1mm) 2.1/4"	(222.1mm) 8.3/4"
	"B" REACH	(57.1mm) 2.1/4"	(272.8mm) 10.3/4"
	"C" REACH	(57.1mm) 2.1/4"	(323.6mm) 12.3/4"
	"D" REACH	(57.1mm) 2.1/4"	(374.6mm) 14.3/4"

Tube O.D. (Mm) inch	Tube Thickness		Tube I. D.		Minimum I. D. Tool Enters		Maximum Expansion of Tool		EXPANDER with (38.10mm) 1.1/2" Long rollers			EXPANDER with (57.15mm) 2.1/4" Long rollers			Ratchet Size Square Inch	
	Bwg	Inch	Mm	Inch	Mm	Inch	Mm	Inch	Mm	Complete Tool No.	Roller Set No.	Mandrel No.	Complete Tool No.	Roller Set No.		Mandrel No.
(19.05) 3/4	14	.083	2.10	.584	14.8	.574	14.5	.639	16.2	B1223	R-6-5	1224-5	1224-5	R-6-A-5	1224-5	3/8
	15	.072	1.82	.606	15.3	.596	15.1	.661	16.7	B1225	R-7-5	1226-5	1226-5	R-7-A-5	1226-5	
	16	.065	1.65	.620	15.7	.605	15.3	.685	17.4	B1227	R-7-5	M-63	1228-5	R-7-A-5	M-63	
	17	.058	1.47	.630	16.1	.619	15.7	.699	17.7	B1229	R-7-5	1230-5	1230-5	R-7-A-5	1230-5	3/8
	18	.049	1.24	.652	16.5	.619	15.7	.699	17.7	B1229	R-7-5	1230-5	1230-5	R-7-A-5	1230-5	
	19	.042	1.06	.666	16.9	.642	16.3	.722	18.3	B1231	R-9-5	M-63	1232-5	R-9-A-5	M-63	
(25.40) 1	20	.035	0.88	.680	17.2	.642	16.3	.722	18.3	B1231	R-9-5	M-63	1232-5	R-9-A-5	M-63	3/8
	21	.032	0.81	.686	17.4	.642	16.3	.722	18.3	B1231	R-9-5	M-63	1232-5	R-9-A-5	M-63	
	22	.028	0.71	.694	17.6	.642	16.3	.722	18.3	B1231	R-9-5	M-63	1232-5	R-9-A-5	M-63	
	14	.083	2.10	.831	21.1	.810	20.5	.909	23.0	B1249	R-12-5	1250-5	1224-5	R-12-A-5	1250-5	3/8
	15	.072	1.82	.854	21.7	.837	21.2	.936	23.7	B1251	R-14-5	1250-5	1226-5	R-14-A-5	1251-5	
	16	.065	1.65	.870	22.1	.837	21.2	.936	23.7	B1251	R-14-5	1251-5	1228-5	R-14-A-5	1251-5	
(28.58) 1.1/8	17	.058	1.47	.882	22.4	.865	21.9	.964	24.4	B1255	R-13-5	1256-5	1230-5	R-13-A-5	1256-5	3/8
	18	.049	1.24	.902	22.9	.865	21.9	.964	24.4	B1255	R-13-5	1256-5	1230-5	R-13-A-5	1256-5	
	19	.042	1.06	.913	23.2	.865	21.9	.964	24.4	B1255	R-13-5	1256-5	1232-5	R-13-A-5	1256-5	
	20	.035	0.88	.929	23.6	.865	21.9	.964	24.4	B1255	R-13-5	1256-5	1232-5	R-13-A-5	1256-5	3/8
	21	.032	0.81	.936	23.8	.883	22.4	.982	24.9	B1257	R-15-5	M-71-3/8	1232-5	R-15-A-5	M-71-3/8	
	22	.028	0.71	.944	24.0	.883	22.4	.982	24.9	B1257	R-15-5	M-71-3/8	1232-5	R-15-A-5	M-71-3/8	
(38.10) 1.1/2	12	.109	2.76	.907	23.0	.883	22.4	.982	24.9	B1255	R-15-5	M-71-3/8	1232-5	R-15-A-5	M-71-3/8	3/8
	15	.072	1.82	.981	24.9	.962	24.4	1.071	27.2	B1263	R-18-5	1263-5	1232-5			1/2
	16	.065	1.65	.995	25.2	.962	24.4	1.071	27.2	B1263	R-18-5	1263-5	1232-5			
(38.10) 1.1/2	17	.058	1.47	1.384	35.1	1.331	37.3	1.472	37.3	B1299	R-29-5	1299-5	1300-5	R-29-A-5	1299-5	1/2
	18	.049	1.24	1.402	35.6	1.331	37.3	1.472	37.3	B1299	R-29-5	1299-5	1300-5	R-29-A-5	1299-5	
	19	.042	1.06	1.416	36.0	1.331	37.3	1.472	37.3	B1299	R-29-5	1299-5	1300-5	R-29-A-5	1299-5	
	20	.035	0.88	1.430	36.3	1.331	37.3	1.472	37.3	B1299	R-29-5	1299-5	1300-5	R-29-A-5	1299-5	
													1300-5	R-29-A-5	1299-5	